



ELM

EXPERTISE IN LABOUR MOBILITY

What makes the Dutch Dutch?



workshop

Introduction to the Netherlands

www.labourmobility.com



ELM

EXPERTISE IN LABOUR MOBILITY

A focus on preparing expatriates and their partners for Dutch culture and the Dutch labour market. Expertise in Labour Mobility provides practical and customised information concerning newcomers to Dutch society.

Being new to a country brings challenges for every expatriate, and being new in the Netherlands comes with its own particular difficulties.

The Dutch pride themselves in their open-mindedness and flexibility and indeed they do tolerate certain things (think soft-drugs, euthanasia) which other countries forbid. But Dutch tolerance also has its limits... To start with, the Dutch people are direct – something they themselves see as openness, but that most foreigners take as being quite rude. After working here for a while, newcomers to the Netherlands may have come across the relative lack of hierarchy in Dutch business and have noticed, for example, how their co-workers can at times ignore authority. And then there is the matter of explaining ‘dropjes’ and raw herring.

This interactive workshop has been designed by Expertise in Labour Mobility to give newly arrived expats and their partners a head start in settling into Dutch society. It is aimed at people who want to make the best of their stay in the Netherlands and who want to get to grips with the Dutch quickly.

www.labourmobility.com



ELM

EXPERTISE IN LABOUR MOBILITY

Programme

- 09.00 – 09.30 welcome with coffee and tea
- 09.30 – 10.00 'get to know you' session
- 10.00 – 11.00 introduction to living in the Netherlands
- 11.00 – 12.15 cultural differences
- 12.15 – 13.15 typical Dutch lunch
- 13.15 – 14.30 introduction to working in the Netherlands
- 14.30 – 15.15 looking for work in the Netherlands
- 15.15 – 16.00 interactive Dutch language speed course
- 16.00 – 16.30 drinks

This workshop provides the participant with all they need to know to make their stay in the Netherlands a success. It may not help to appreciate the taste of 'dropjes', but it will help you to value the Dutch directness slightly better!

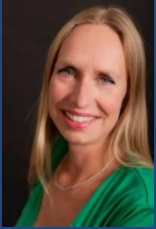
The workshop takes place at the Expertise in Labour Mobility office in Rotterdam and takes a full-day. Participation is 185 euro (exclusive VAT) per person, including lunch and drinks.

www.labourmobility.com



ELM

EXPERTISE IN LABOUR MOBILITY



Nannette Ripmeester is a Dutch national, with an MA degree from the University of Amsterdam in European Studies. She worked for seven years at the European Commission in the area of mobility of workers. As ELM's founder and director, she aims at making mobility work. Her role towards corporate clients, universities and international mobile expats and graduates is helping organisations and individuals to become part of the global workplace. She has been giving workshops and presentations around international mobility for over twenty years.



Wytske Siegersma is a Dutch national with an MA degree from the University of Groningen in Roman Cultures and Languages with an emphasis on Spanish speaking countries. At ELM Wytske is our International Projects Coordinator. She frequently delivers presentations in the Netherlands and abroad, about intercultural differences in a higher education setting.



Archie Pollock is a British national, and completed his bachelor degree at the University of the West of Scotland, in the field of Politics & Sociology. After completing his Masters Degree in International Public Management at the Erasmus University Rotterdam, Archie started as Cultural Projects Coordinator within the ELM team. He is a highly effective trainer for internationally diverse audiences.

Expertise in Labour Mobility
Mathenesserlaan 255
3021 HD Rotterdam
T +31 (0)10 477 68 16

For more information, contact:
Ms Lotte Edelkoort
l.edelkoort@labourmobility.com

www.labourmobility.com